



Europeana Space has received funding from the European Union's ICT Policy Support Programme as part of the Competitiveness and Innovation Framework Programme, under GA n° 621037

## Content Space

# Creative Commons, a Guide to Proper Attribution

Creative Commons is a non-profit organization that enables the sharing and use of creativity and knowledge through free legal tools. They have created free, easy-to-use copyright licenses which provide a simple, standardized way to give the public permission to share and use creative work according to the chosen conditions of the creator. CC licences are not an alternative to copyright, but they allow authors to easily change their copyright terms from the default of “all rights reserved” to “some rights reserved.”

With all Creative Commons licences, your use of the material carrying the licence (your exercise of the Licensed Rights) is made subject to the condition of attribution. This means you must attribute all the Creative Commons licensed works you choose to use in your product or publication. You must acknowledge the creator, the title of the work, the licence, link to the licence, and add a description of any modification or alteration to the work, linking to sources if applicable.

According to the terms and conditions set out by Creative Commons for Attribution:

“You must give appropriate credit, provide a link to the license, and indicate if changes were made. You may do so in any reasonable manner, but not in any way that suggests the licensor endorses you or your use.

If supplied, you must provide the name of the creator and attribution parties, a copyright notice, a license notice, a disclaimer notice, and a link to the material. CC licenses prior to Version 4.0 also require you to provide the title of the material if supplied, and may have other slight differences.

In 4.0, you must indicate if you modified the material and retain an indication of previous modifications. In 3.0 and earlier license versions, the indication of changes is only required if you create a derivative.”

For full details on the exact requirements for different CC Licences go to the section on Attribution and Marking in the License Versions document on the Creative Commons website and also see the detailed attribution comparison chart.

CCO and the Public Domain Mark are legal tools rather than licences and do not formally require attribution. However, attribution may still be considered a moral obligation and best practice, since acknowledgement of the creator and the title of a work are inalienable moral rights a creator has regardless of the presence or absence of rights labels. It is important to note that it is the creator/creators of a work, rather than the publisher or distributor that must be accredited.

For offline publications where a link to the licence is not possible, the full URL must be written out. A document or product that can be easily downloaded should also have the link written out in full as is shown at the end of this document.

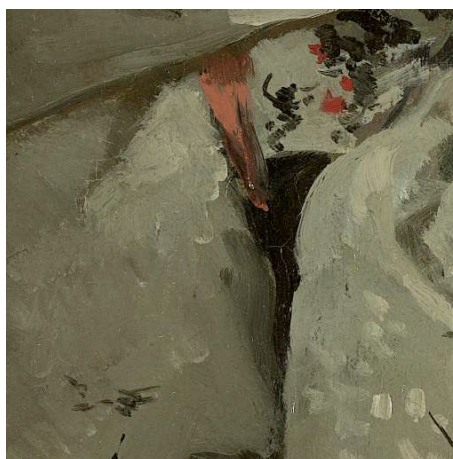
Simply adding licensing symbols such as **CC BY** is insufficient for re-using material made available with Creative Commons licensing.



L'elephant de Xiang by Xiang Shi courtesy of Frissiras Museum and Digitising Contemporary Art is licensed under CC-BY-NC-SA 4.0. Go to <http://creativecommons.org/licenses/by-nc-sa/4.0/legalcode> to read the full licence text.

The above example shows proper attribution of a photographed work of contemporary art found on the Europeana portal. It states the title, creator and licence and also acknowledges the memory institution and digitisation project which provided the art work and image. It is possible that this photograph may be used in printed form so the URL of the licence is written out in full.

The example below shows proper attribution of a highlight from a photograph of a painting held by Rijksmuseum in the Netherlands and also available via the Europeana portal. It states that this is a crop of a photograph in addition to stating the title, creator and licence. It also acknowledges the name of the memory institution which owns the actual painting.



Crop highlight from Girl in white kimono by George Hendrik Breitner, 1894, courtesy of Rijksmuseum, CCO (no rights reserved). See <https://creativecommons.org/about/cc0>.

Good and bad examples of attribution can be found in the Best Practices for Attribution guide on the Creative Commons website.

If attributing open material in this way would compromise the aesthetics of your publication or product you can attribute on an adjacent or accompanying page as long as it is clear and accessible. You can be creative in the way you attach the attribution, for example, by using information bubbles in a document or artistic labels attached to a product or installation for example. In other types of media you can use conventional places for attributions such as the bibliography in a book, the credits after a movie or the colophon of a report.

Note that failing to provide proper attribution terminates the licence which means that you no longer have permission to use the work and are infringing the copyright of the original licensor. They are likely to initially serve you with a notice to ask you to cease from using their material. However, this also has the potential to result in the original licensor taking legal action against you.



[www.europeana-space.eu](http://www.europeana-space.eu)



@EuropeanaSpace

Project Coordinator



Technical Coordinator



Content Space Task Leaders



**PACKED**

Centre d'Expertise  
pour le Patrimoine Numérique

Partners



REPUBLIC OF ESTONIA  
MINISTRY OF CULTURE



Institut für  
Museumsforschung  
Staatliche Museen zu Berlin



Lehmann & Wedder  
Museumsm Medien



Working in association with the Europeana Foundation



Official Media Partner

**DIGITAL CULTURE**  
[www.digitalmeetsculture.net](http://www.digitalmeetsculture.net)