

Rode – Altarpiece in Close-up Educational demonstrator

Niguliste Museum
Estonian Ministry of Culture
Archaeovision

rode.ekm.ee

Main view of the website



EESTI

ENGLISH

DEUTSCH

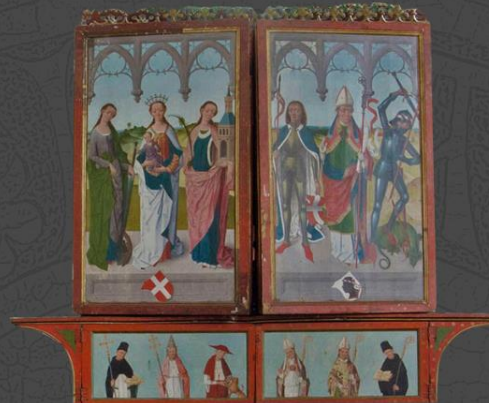
WHO IS HERMEN RODE? ➞



HERMEN RODE (ca 1430-1504) was one of the most prominent painters in northern Europe in the Late Middle Ages.

The Retable of the High Altar of
Tallinn's St Nicholas' Church,
1478-1481 ➞

TALLINN'S ALTAR



WHAT'S ON THE PAINTING?

Historical investigation of the altar

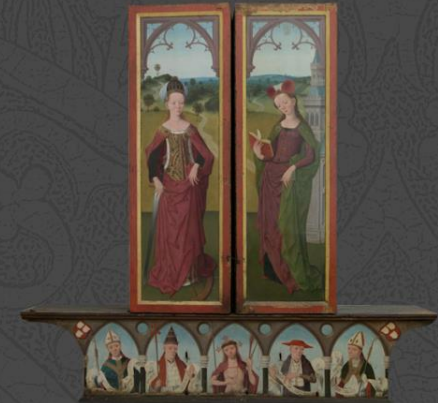


WHAT'S IN THE PAINTING?

Technical investigation of the altar

St Luke's Altar Retable of the
Painters' and Glaziers' Guild in
Lübeck, 1480's-1490's ➞

LÜBECK'S ALTAR



WHAT'S ON THE PAINTING?

Historical investigation of the altar



WHAT'S IN THE PAINTING?

Technical investigation of the altar

High resolution images of the altar



EESTI

ENGLISH

DEUTSCH

IN THE PAINTING

Investigation view:

1

1

2



Show points of interest



Tallinn's altar: Visible/Infrared



Visible



Infrared

Annotation view of the image



EESTI

ENGLISH

DEUTSCH

IN THE PAINTING

Investigation view:

1

1

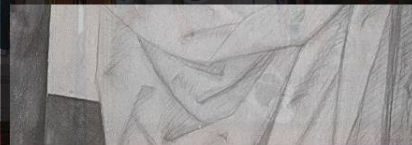
2



Show points of interest



HOOK-SHAPED FABRIC FOLDS



The contours of the details and main light-dark areas are outlined along with the shaded areas that are indicated with dense hatching strokes. In places, the fabric folds are marked with characteristic hook-shaped terminations. The drawings seem to have been executed with a fluid medium characteristic of 15th-century traditions, using either a brush or a pen.



Tallinn's altar: Visible/Infrared



Visible



Infrared

Synchronized view for multispectral images



EESTI

ENGLISH

DEUTSCH

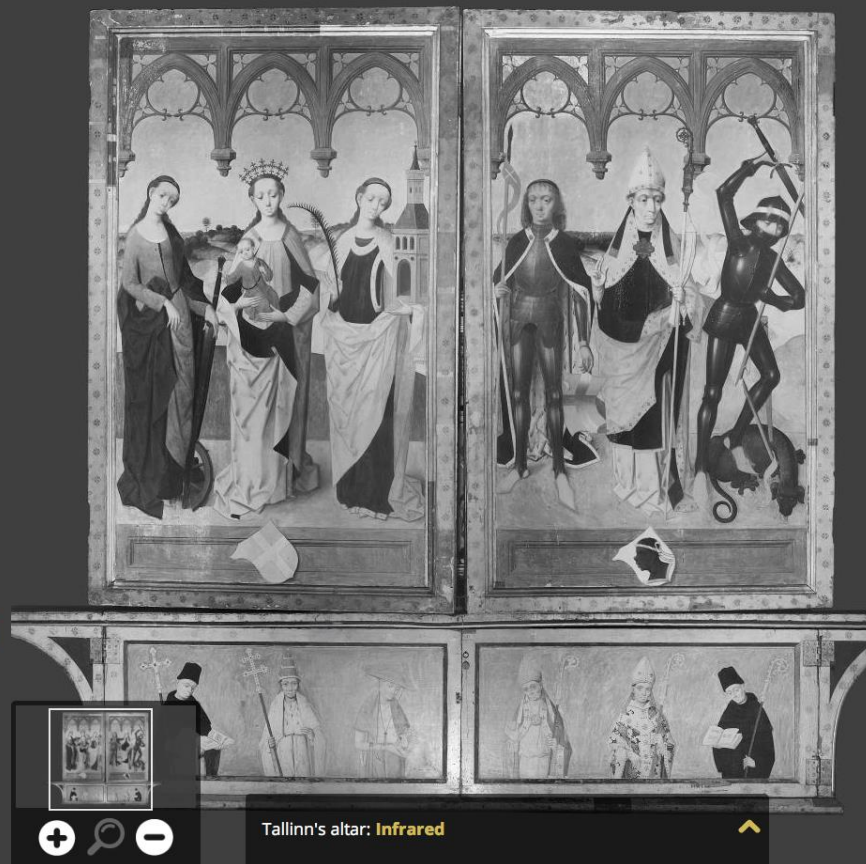
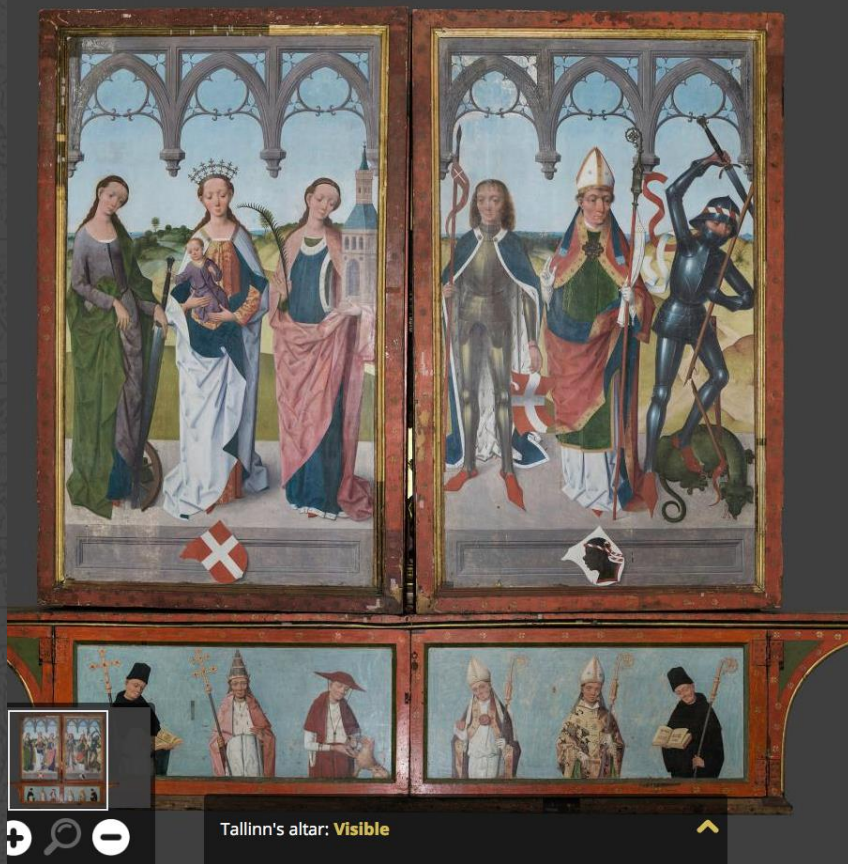
IN THE PAINTING

Investigation view:

1

1

2



Close up of the detail

